



BACK TO THE FUTURE

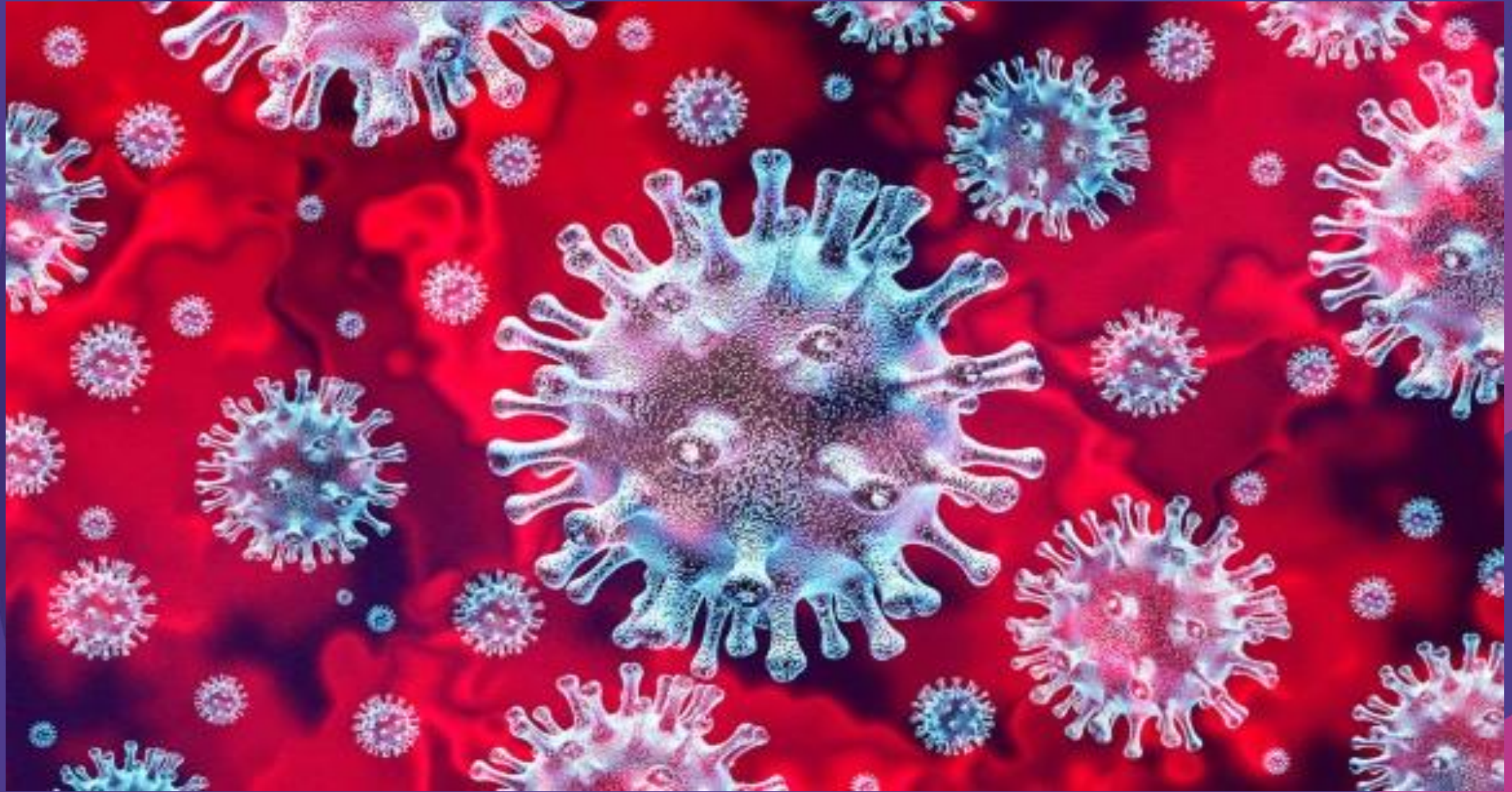
Delivering Innovation in Digital Health and Care in Scotland



Digital Health & Care  
Innovation Centre

Transforming great ideas into real solutions

Dr George Crooks OBE – Chief Executive Officer









# Communities & technologies are getting smarter



LORANET

CLOSED  
DATA

OPEN  
DATA

SMART  
METERS

CONSUMER  
DATA

SENSORS

DATA  
SCIENCE

5G/6G

IOT

AI

SMART  
INFRASTRUCTURE

WEARABLES





**KEEP  
CALM**

**AND**

**DO AS YOU ARE TOLD**

KeepCalmAndPosters.com











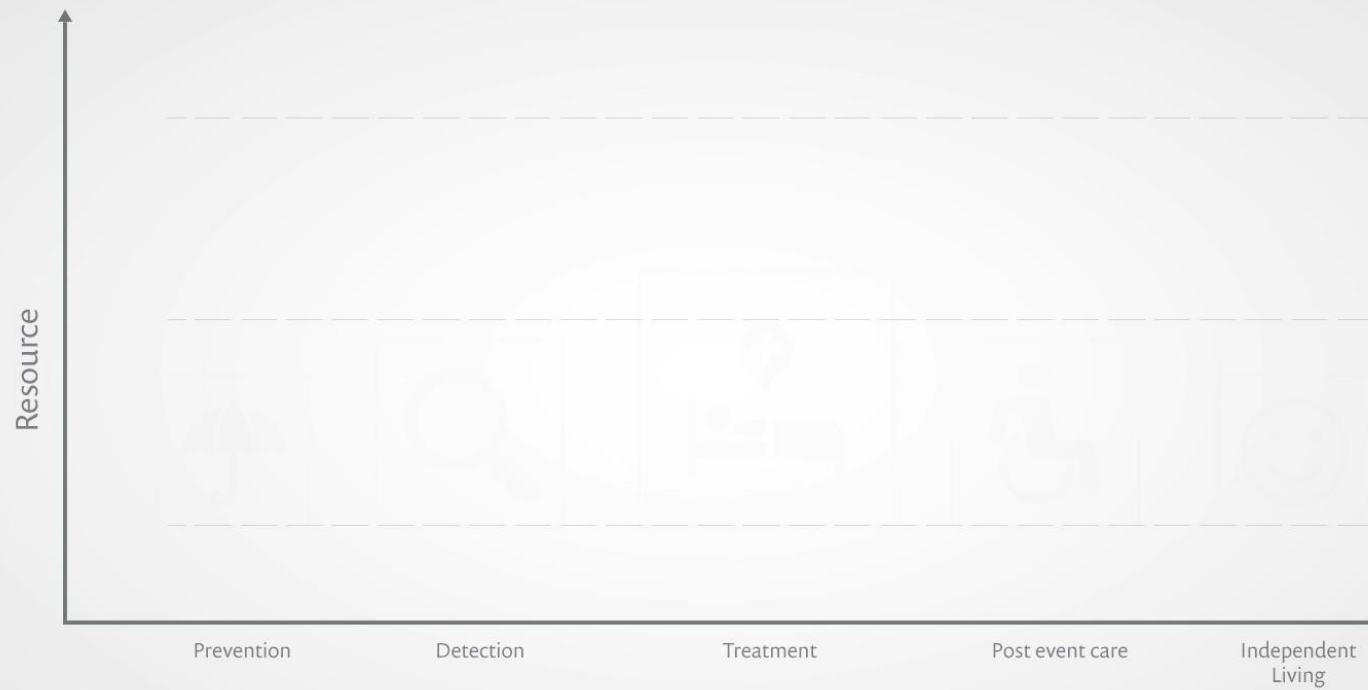








# Our focus is to shift the balance of care



## SHIFTING THE BALANCE OF CARE





Integrating to secure Sustainability?





Us and Them ???



Designing for digital at scale

Brain Health

Dementia

Mental Health and Wellbeing



# Integrating innovation strands to enable adoption



DEMONSTRATING



Service model innovation



Technical/Digital innovation



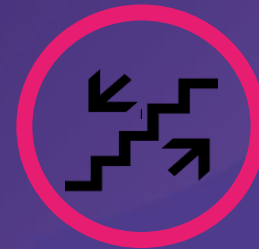
Business model innovation

ACCEPTED SERVICE MODELS

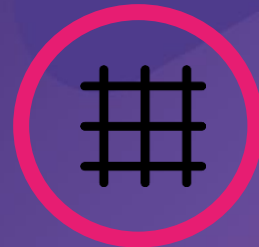
READINESS TO ADOPT/ SCALE



# Service design principles



Predictive and proportionate care



Balance between user and system needs



Citizen activated services





# Technical principles



Create data only once



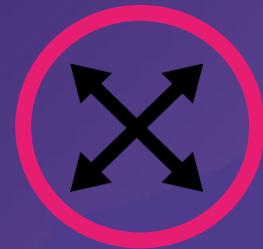
Trust in distributed data



Personal ownership of data



# Business principles



Open solutions that scale and evolve



Services not products



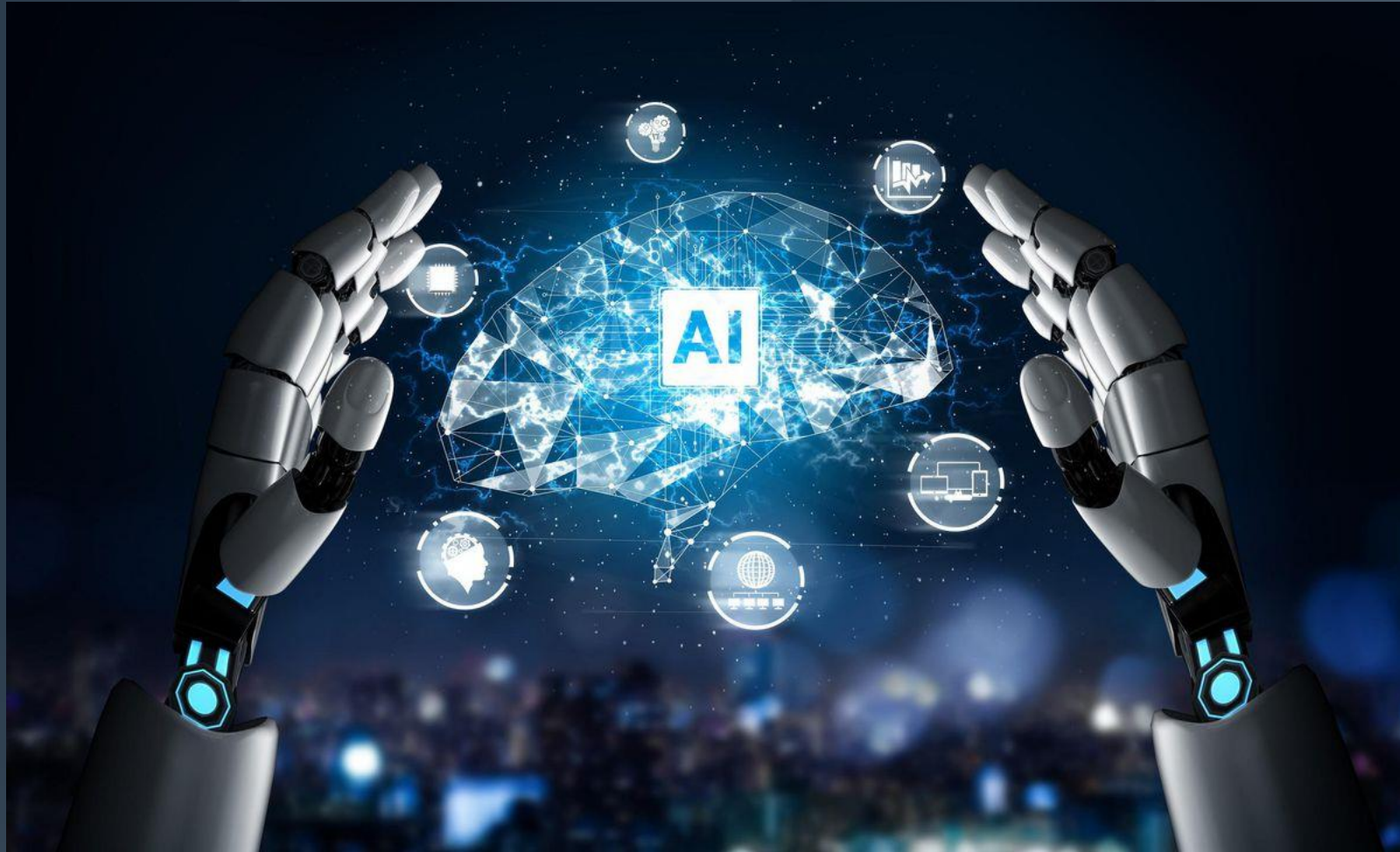
Serve the consumer and the commissioner





DIGITAL  
HEALTH & CARE  
INSTITUTE

# Next Generation Services





**CONTROL CAN BE OK!**







# LET INNOVATION FLOURISH







# Person Centred Data Sharing – Whole of Life



Mydex CIC / University of the Highlands and Islands  
NHS Grampian / Moray Council / The Glasgow School of Art

## BACKPACK

Exploring how people living with Multiple Sclerosis would like to manage their own personal information in order to improve the experience of accessing services, and understand the potential of a person-owned data store (or digital 'Backpack') to support health and care professionals to deliver more integrated and person-centred care.

Participants: Participants: 9

Methods: Focus Group  
Experience Mapping  
Paper prototyping  
Digital prototyping  
Prototype Iteration

Two Exp. Labs  
+ 1 Mini-Lab

Lab Location: - Elgin

2016

Lab Team:   
→ Gemma Teal  
→ Dr. Tara French  
→ Dr. Jay Bradley

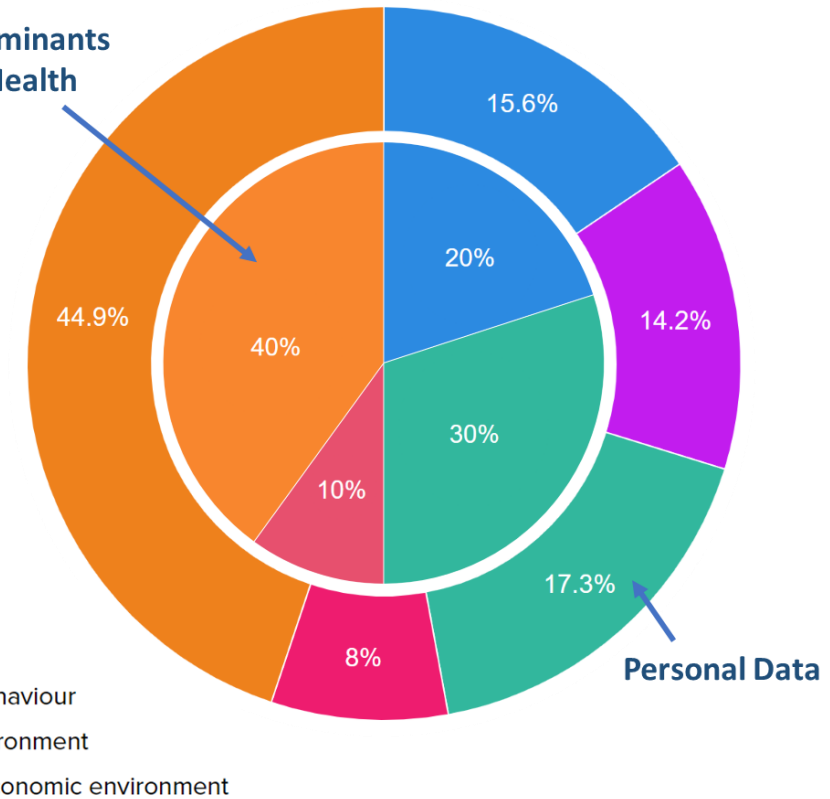
10 Hours Experience Lab time  
+3 Hours Mini-Lab time

Academic Output:  
x1 Report  
x1 Video

Tools:  
- Backpack prototyping tool  
- Personas  
- Experience map  
- Service mapping tool  
- Scenarios  
- Digital prototypes

Person-owned information  
Navigating Services  
Multiple Sclerosis

## Determinants of Health







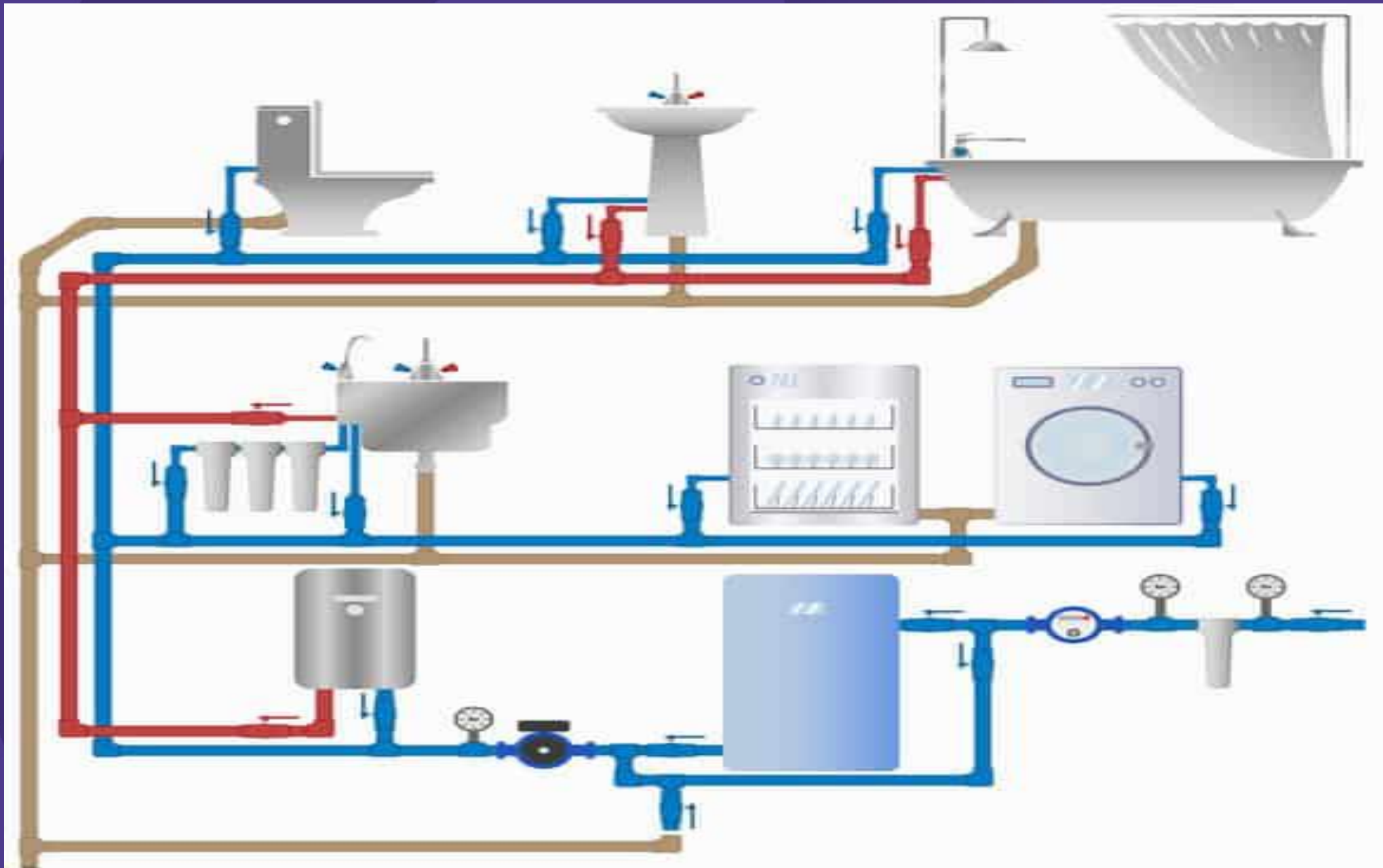
# BLEND CITIZEN GENERATED DATA WITH FORMAL HEALTH AND CARE DATA



DELIVERS THE TRUE LIVED EXPERIENCE OF A CITIZEN

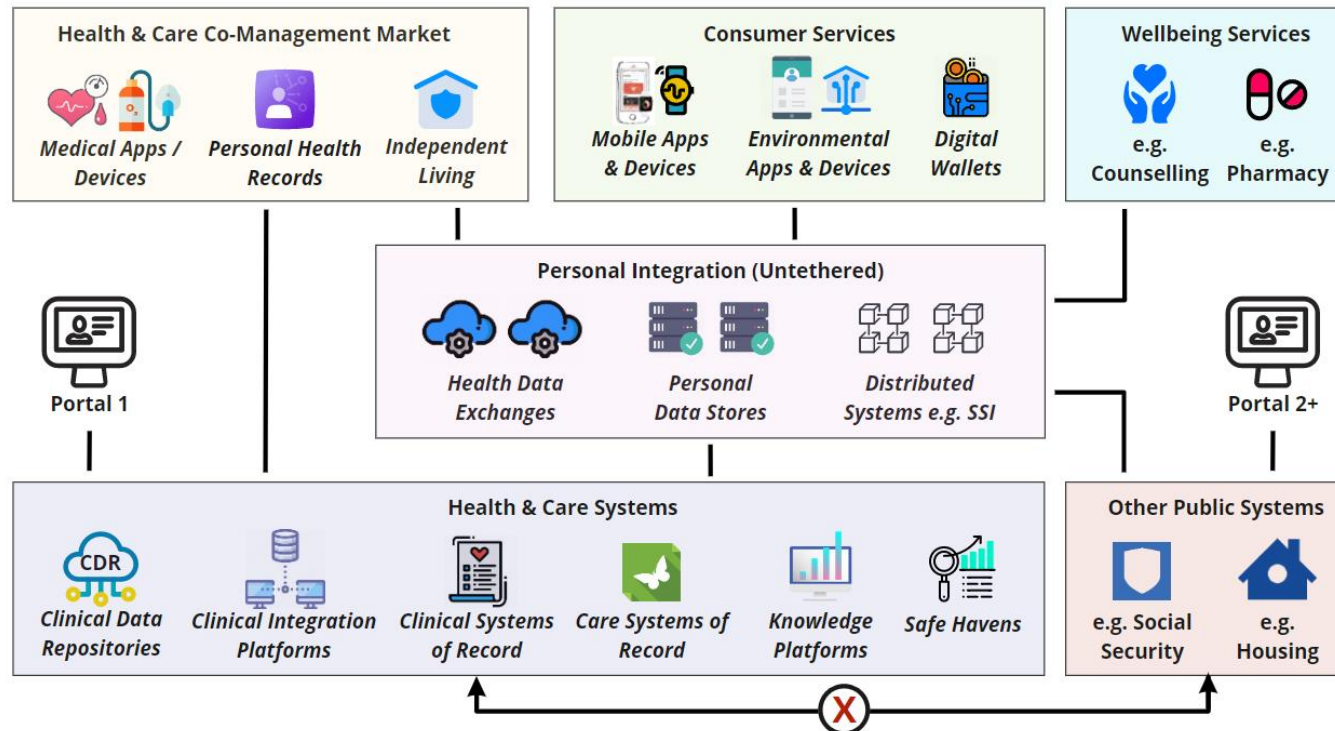
[dhi-scotland.com](https://dhi-scotland.com)







# Person Centred Data Sharing - Architecture



**Personal Integration infrastructure** can bridge between a citizens' broader life and their health and care services

**Supports person centred, integrated services:**

- Strong citizen user control
- Breaks traditional silos
- Respects complexity of user

**Supports innovation:**

- Choice of many suppliers for both citizens and services
- But with a focused, coherent route to integration
- Unfettered innovation centred on citizens

**Requires new kinds of effort:**

- More learning needed around how to orchestrate
- Managing a variety of suppliers (but reuse of integrations)



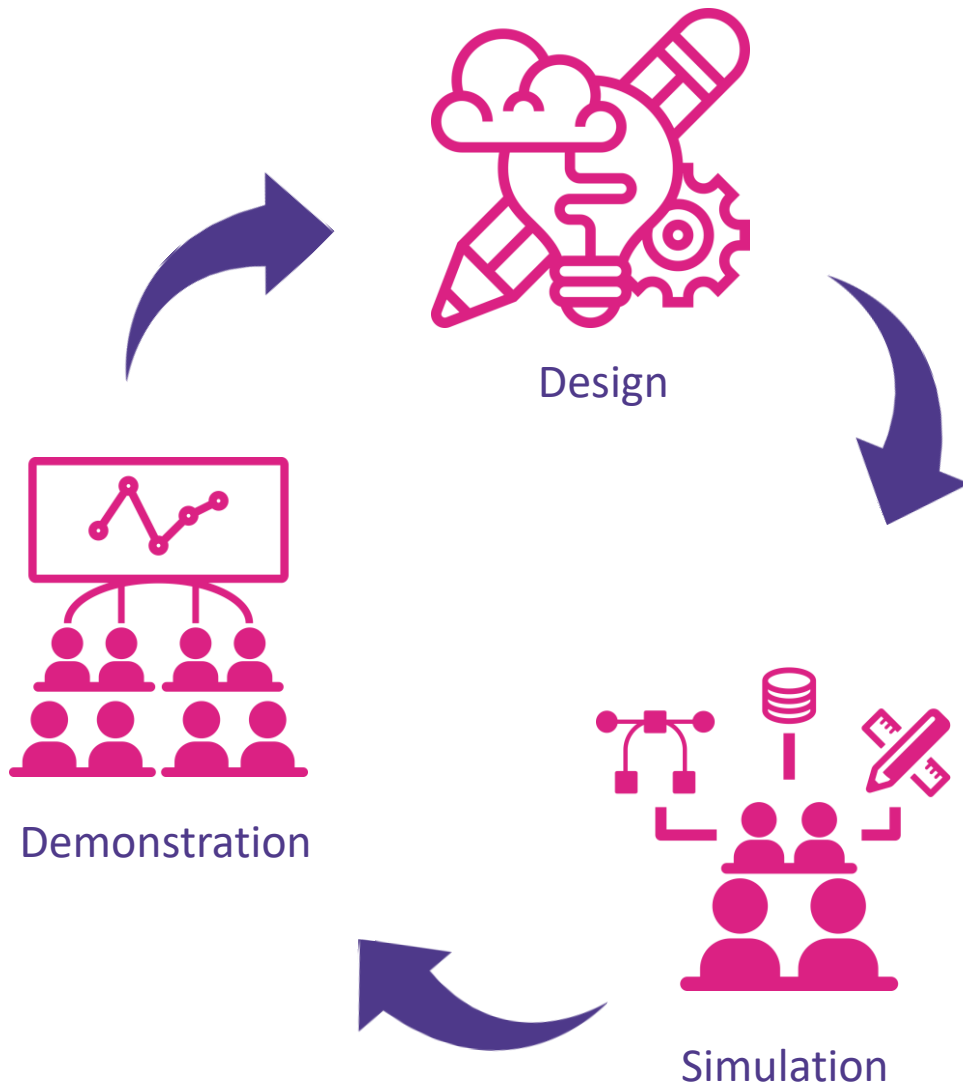
# DHI Exchange

Exchange Knowledge

Exchange Ideas

Exchange Data

Exchange Impact





# The DHI Exchange



- Our space for you to innovate!
- An environment to help drive knowledge exchange around digital health and care innovation.
- Recognised as one of Scotland's key national assets to support health and care service transformation and promote Scotland to international networks.
- Our team focuses on making person-centred data-sharing infrastructure available to innovators, facilitating the integration of new digital capabilities into health and care services and creating commercial opportunities in a global marketplace









24<sup>th</sup> June 2021



## Digital Health & Care Innovation Centre



Join our Network:  
[www.dhi-scotland.com/join-our-network](http://www.dhi-scotland.com/join-our-network)